

harbourside

day nursery

HAMPSHIRE'S FIRST BEACH & NATURE NURSERY





WELCOME TO HARBOURSIDE

Harbourside Nursery is situated in a unique location on Hill Head harbour, with the Titchfield Haven Nature Reserve, a national park with a rich natural habitat of rivers, marshlands, ponds, and extensive Solent coastline, literally right on our doorstep.

Our vision is simple; a learning environment that *is* the outside environment. Our children will spend their days immersed in nature, exploring not only the magnificent shoreline, but all that the Haven has to offer. This nature reserve and coastline will serve as their classroom, where they will learn and grow immersed in natural cycles—from daily tides to seasonal changes - nurtured both by an incredible team of passionate carers, and by the very world that they are part of. To paraphrase Margaret McMillan, CBE, and nursery pioneer, our children will flourish in an environment where education will be inevitable.

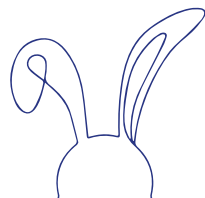
Our focus is clear; a curriculum centred around the care of nature, sustainable living, and environmental responsibility, designed to deliver all of the Early Year Foundation Stages whilst going above and beyond in developing confidence, creativity, resilience, and well being, both physical, and mental.

And for those days when the weather outside is truly awful, a stunning indoor day-care facility incorporating the experience born of 20 years providing the highest standards of early years care will ensure that these children continue to benefit from their time at this one-of-a-kind day nursery.

We are sure that you have many questions.

Please read on...

Freya Derrick MBE
Founder & Managing Director
Hopscotch Day Nurseries



WHAT ARE THE BENEFITS OF OUTDOOR LEARNING?

Our mission at Harbourside is to provide a day nursery with a dedicated ethos and commitment to an early years education centred around the outdoors. We will provide a holistic approach to childcare, recognising that high levels of wellbeing are essential for young minds to flourish and achieve their best possible outcomes. With a child-led approach, we will scaffold children's learning through their own inquiry and interests, maximising the advantages of our location to provide awe-inspiring opportunities for children to explore the world. At the heart of our approach is the natural world, and we are committed to promoting connections with the spaces on our doorstep and beyond, and with them, a lifelong love of nature and wildlife, and an appreciation for natural phenomena. Between the comings and goings of the tide and the everchanging landscape of the seasons, we will create a culture of environmental stewardship, raising the next generation to look after the world within which we live, and to care for the creatures with whom we share it.

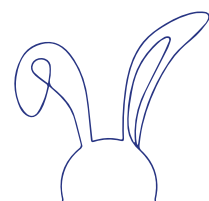
The benefits of outdoor learning are widely recognised and celebrated, and studies increasingly demonstrate the advantages of this approach. Research indicates that access to nature improves mental wellbeing, motivation, and overall health. From navigating uneven terrain to exploring ecosystems, being outdoors provides children with the space and time to develop movement freely, creates physical stamina, and satisfies curiosity. They are presented with ample opportunities to approach risk, make decisions, and persevere even when conditions aren't ideal, building the vital problem-solving skills, resilience, and confidence crucial for life. Learning whilst immersed in the sound of the waves washing up the shore, the breeze ruffling through leaves, and birds calling as they fly overhead creates interest and fascination, inspires imaginations, introduces a vast and varied vocabulary, and enables children to experience the world through all of their senses. Most importantly, advocates of outside play attest to the far-reaching benefits nature has on happiness in childhood and beyond, and whilst we agree that learning and development are of great importance, joy and happiness will always be central to our approach.

WHICH AREAS WILL YOU ACCESS WITH THE CHILDREN?

Our location on the harbour is ideally suited to this exciting and diverse outdoor provision. Behind the setting itself is the Titchfield Haven, a national nature reserve which we will

“The best classroom, and the richest cupboard,
is roofed only by the sky.”

- Margaret McMillan



have open access to. It is home to an abundance of birds, mammals, insects, reptiles, and plants for our children to explore and investigate. Additionally, we will access the Meon Shore with its pebbled and sandy beach spaces, and the harbour. These environments, the comings and goings of the tide, the changing seasons, creatures and their habitats, lend themselves to fantastic learning opportunities. The setting itself will also have its own garden space.

WHAT TRAINING WILL THE HARBOURSIDE TEAM RECEIVE?

It takes a special kind of person to feel excited and motivated to be outside even on wet and gloomy days. We have already started to recruit a team with an authentic passion for our vision at Harbourside, and a genuine appreciation for the benefits of outdoor education. We are investing heavily in team training and beach school training will take place in the areas surrounding the nursery. This will provide our team with the tailored and expert knowledge of the beach school approach required to successfully deliver our ambitious curriculum, maximising the unique features of our location. Furthermore, in addition to Paediatric First Aid training, our team will receive accredited Forest/Beach School specific first aid training to ensure our knowledge is robust and appropriate for the environment.

WHAT WILL YOU DO IN THE CASE OF INCLEMENT WEATHER?

We do anticipate that the children will spend time outdoors in almost all weathers between the hours of 0900 – 1600. We will provide an essential kit list to ensure that all children will have adequate clothing to keep warm and dry on cold and wet days, and cool and sun-safe when necessary. Each morning we will conduct a risk assessment built around weather forecasts, using this information to guide our plans each day. Using weather monitoring instruments in the setting, the children will actively participate in completing these assessments. We will also conduct dynamic assessments, making on the spot decisions based on any unexpected changes in the weather to ensure we continue to maintain the safety of our children. We have a clear understanding of the age-related needs of young children, and this will be a significant factor in our decision-making processes; for example, we know that less mobile babies are likely to feel the cold more and therefore we would plan our timings accordingly.

During extreme weather we will either stay at nursery, or significantly reduce the amount of time we spend outdoors as appropriate. On these occasions, and either side of the core day, we will make full use of the bespoke indoor space, and uniquely designed gardens to support our exciting curriculum. Our capacity, and therefore your child's attendance will not be impacted in these times.

WHAT WILL YOU DO ON PARTICULARLY HOT AND SUNNY DAYS?

We will manage sun and heat in a similar way to inclement weather, ensuring that all children are appropriately equipped, and carrying out daily risk assessments to plan our activities around the weather. We have usage of a beach hut in which will be appropriate equipment to create shade, and whilst we encourage children to drink plenty of water at all times of the year, during warmer weather we will increase the amount of static water breaks and provide regular prompts to take a drink and stay hydrated.

WILL YOU OPERATE ON ENHANCED RATIOS?

We want our children to get the most from access the vast outdoor provision available, and we recognise the importance of ensuring we are appropriately staffed for this to happen. Between our core hours of 0900 – 1600 we will ordinarily be running on enhanced ratios as follows:

Non-mobile babies:	1:3
Under 2 years:	1:2
Under 3 years:	1:2
Over 3 years:	1:4

HOW WILL YOU ENSURE MY CHILD IS SAFE OUTSIDE OF THE SETTING?

The safety of our children and team is always a top priority in all that we do. We will use Risk Benefit Analysis to enable children to explore the beach environment whilst considering the potential risks. A Risk Benefit Assessment (RBA) allows our team to identify not only the potential risks and hazards of activities, but also the benefits too, ensuring a proportionate and balanced response to risk mitigation. A key principle

**No one will protect what they don't care about;
and no one will care about what they have never experienced.**

- David Attenborough.

of Risk Benefit Analysis is that risk is an essential aspect of intellectual, emotional, and physical development.

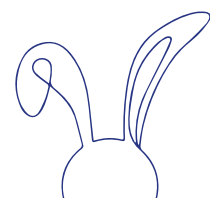
In preparation for opening the setting, our team will spend a vast amount of time in the locality to experience the environments in varied conditions and at different times of day, feeding information into the planning process and the completion of our assessments. Alongside this, we are conducting thorough interrogations of our current policies and procedures to ensure that amendments are made, and our processes are robust. Our enhanced ratios will facilitate close supervision of the children whilst they explore the outdoor spaces.

When sending your child to Harbourside it is important to understand that exposure to risk is embedded in our approach, as appropriate for the age, and stage of development. As your children progress, they will learn to address and manage risk with increasing independence and confidence, and this will be scaffolded and embedded in a stepwise fashion. For example children will be involved in carrying out our daily risk assessments, gradually developing the complexity of their decisions. Whilst children are developing these skills they will have the continued support of well-informed adults who will always maintain safe boundaries, promoting and prioritising the safety and welfare of the children. By confronting risks in a managed and safe environment, children gain the confidence and skills required to take on greater risks throughout their life.

WILL THERE BE INDOOR PROVISION AVAILABLE?

Yes – our indoor setting is being thoughtfully designed to inspire curiosity, creativity and a sense of calm throughout. We believe the environment acts as a “third teacher”, and each of our beautiful rooms will benefit from a selection of considerably curated resources for the specific developmental stages and needs of the children who attend Harbourside.

As a Beach and Nature Nursery, outdoor education is central to our ethos, however this does not supersede the safety and wellbeing of your children. Breakfast will be served within the nursery building, and we will have ample space for lunch and tea indoors too, although at times, lunch





“The more risks you allow your children to take,
the better they learn to look after themselves.”

– Roald Dahl

or tea be served on the Beach or Haven. The setting will have fully equipped sleep spaces, although we hope to be able to accommodate some outdoor sleeping too. Your children will be dropped off and collected from the setting itself, and we will have full use of the space as required to provide a balanced approach and ensure the comfort of our children and team. We have worked in partnership with our architects to bring to life our vision of ensuring that each age group benefits from a unique view looking out over the harbour. In framing this outside space, we will create language rich environments designed to promote with awe, wonder, and inspiration.

WHAT SESSIONS WILL YOU OFFER?

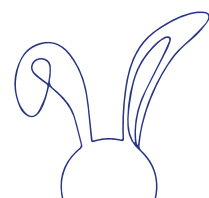
We will offer two types of session:

Full day:	0800 – 1800
School Day:	0900 – 1600

There will be a minimum requirement for all children to attend at least two core days. We strongly believe that this is essential for children to establish secure relationships, and to benefit from our approach. We also plan to put restrictions in place around drop off and collection times - both to minimise the disruption to the day and maximise our time spent outdoors. We will ask that all children are dropped off by 0930 and are not collected before 1530, unless in exceptional circumstances such as an appointment. The team will be unable to go between the nursery and their group for individual collections and drop offs.

WILL THERE BE THE OPPORTUNITY FOR CHILDREN TO ATTEND HARBOURSIDE ALONGSIDE THEIR EXISTING HOPSCOTCH SETTING?

Many of your children are already settled within our existing Hopscotch settings, and we understand that you may not want to disrupt them and move them entirely. We are more than happy for you to continue attending your current setting in addition to Harbourside, providing minimum attendance is met.





Nursery Manager Lisa, growing up on the beaches around Harbourside. She can still be found, ice-cream in hand and sandy socks if you look hard enough....

AN INTRODUCTION TO LISA HURST, HARBOURSIDE NURSERY MANAGER

"I started working in early years in 2012, having been inspired by our experience with our son's nursery, and seeing first-hand the impact of high-quality care and education in the formative years. After completing my Level 3 qualification, I progressed through positions including room leader, deputy nursery manager, acting manager, and nursery manager. Between 2019 and 2023 I completed my Foundation Degree in Early Years Care and Education, followed by my BA Hons in Education Studies and whilst it wasn't without its challenges, I relished the chance to be back in the classroom! I found my passion for outdoor learning in 2020 whilst managing a Forest School setting, and quickly recognised how impactful the approach is, and how it resonated with both my professional and personal values.

When I was presented with the opportunity to become involved with the Harbourside project, I knew this was the chance to create something really quite special. I felt an immediate connection with Freya's creative vision to offer a place from which children can learn whilst immersed in nature, experiencing natural phenomena first hand, and developing an authentic and long-lasting love of the world within which we live. We are currently enjoying the process of designing a unique and inspiring curriculum which will not only facilitate the expected learning and development of children as they progress through the setting, but also embed an appreciation of the changing seasons, an understanding of how to protect and sustain the environment, an awareness of how to approach and manage risk, and the belief that the most joy can sometimes emerge from the least ideal conditions. Having formed some of my most cherished childhood memories playing along the Solent, and having relived these with my son, I'm eager to play a part in creating the same treasured memories for other children.

I look forward to meeting you, and to joining with you on this exciting journey.

Lisa H. x

WHAT ARE THE FEES FOR HARBOURSIDE?

The fees for Harbourside will be determined by the setting's operational costs, particularly the implications of running enhanced ratios. Indicative fees for Harbourside are likely to be as follows, however will be subject to review in March 2025.:

Full Day	0800 – 1800	£90
Core Day	0900 – 1600	£80

We will be accepting the government's 15- and 30-hour funding, and Hopscotch's finance team will be on-hand to assist you with navigating these provisions. The additional service charge per funded hour will be £2.75.

In order to confirm your space at Harbourside we will require a £150.00 reservation deposit to be paid at the point of registration.

FOR ENQUIRES OR TO REGISTER YOUR INTEREST, CONTACT US:

HDN Parent Liaison Team
enquiries@hopscotchdaynurseries.co.uk
02392 559 840

Lisa Hurst - Harbourside Nursery Manager
Lisa.Hurst@hopscotchdaynurseries.co.uk
01329 630222

www.hopscotchdaynurseries.co.uk/harbourside

harbourside

day nursery



READY TO ENQUIRE?

We're new to Hopscotch....

First time parents to Hopscotch please use this code to link to our enquiry form. Once completed, our parent liaison team will be in touch to discuss getting you registered and welcome you into the Hopscotch family.



We have a Hopscotch child....

We're thrilled that you would like your child to experience Harbourside, either as a complete replacement for their existing place, or in a hybrid contract. Please use this code to give us some more information...

